

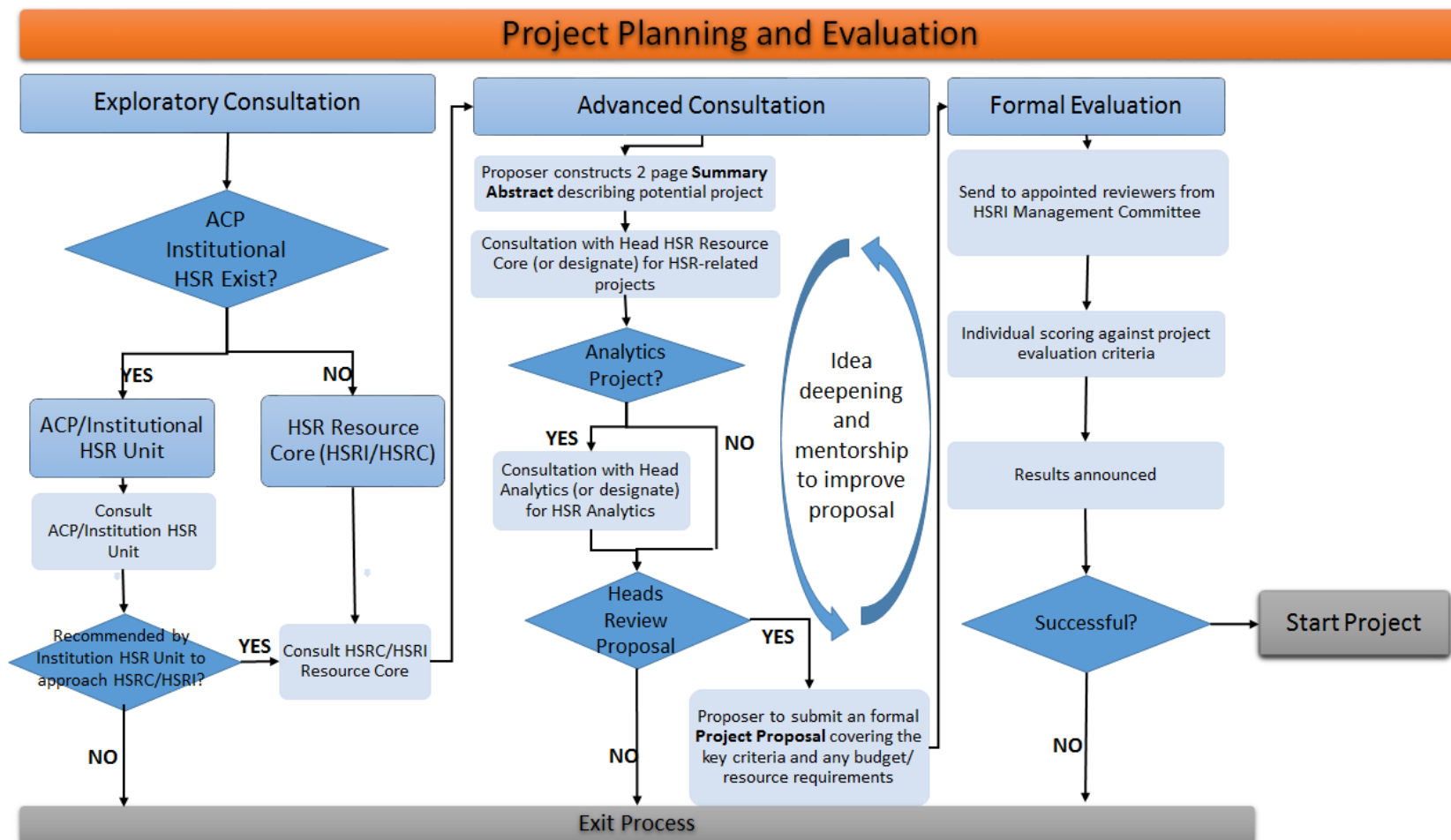
SingHealth Health Services Research Centre (HSRC)

Institution Specific Projects

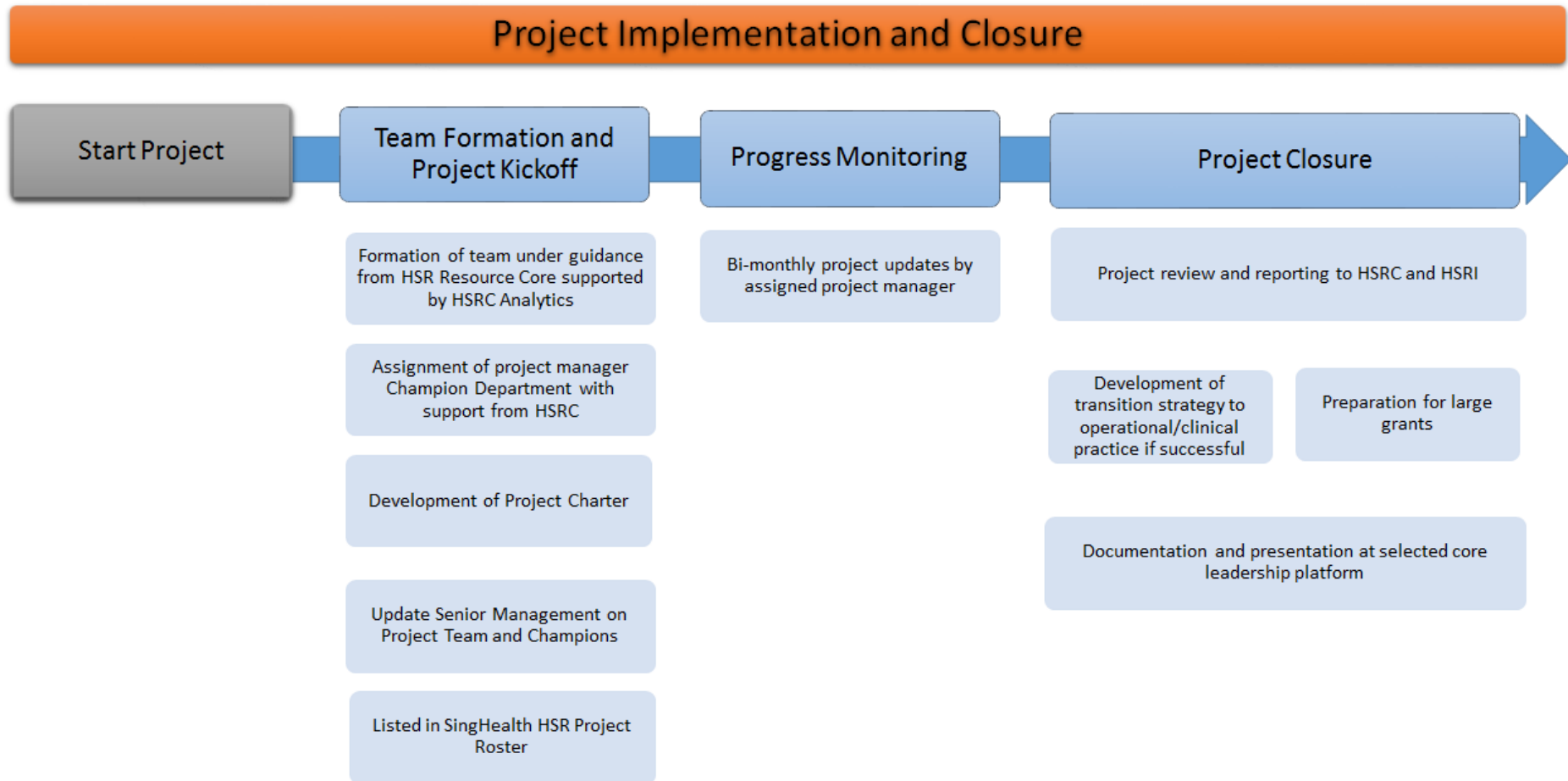
SingHealth HSRC will develop and support HSR projects of importance to each SingHealth institution. These projects will need to be endorsed by the senior leadership of each institution and evaluated by the Joint HSRI/HSRC Management Committee. The project can be surfaced to SingHealth HSRC after consultation with the respective ACPs/Institutional HSR Units. Once the projects are approved, they will be supported jointly by the SingHealth HSR Resource and Analytics Core through HSRI.

The project evaluation/implementation workflow and project selection criteria are summarised below.

Project Evaluation Workflow:



Project Implementation Workflow:



Project Evaluation Criteria:

